

The 8th Classic Wooden Sailboat Race
In conjunction with the NSHOF/CTSA Classic Wooden Sailboat
Rendezvous

17 September 2017
National Sailing Hall of Fame, Annapolis, Maryland

A fun gathering of classic wooden sailboats to showcase their history and elegance and provide an informal opportunity to compete in a low-key race against similar vessels!

NOTICE OF RACE

1 RULES

- 1.1 The regatta will be governed by the rules as defined in *The Racing Rules of Sailing*.
- 1.2 Racing rule 26 will be changed as follows: The start will be a “pursuit-style” start with the slowest boats starting first. The rule changes and start times for each boat will appear in full in the Sailing Instructions. The Sailing Instructions may also change other racing rules.

2 ELIGIBILITY AND ENTRY

- 2.1 The regatta is open to sailing yachts with an overall length on deck less than 65 feet, designed before 1970 whose hull is built primarily of wood. Vessels designed after 1970 that wish to enter will be reviewed on a case-by-case basis.
- 2.2 Eligible boats may enter by completing the entry form and mailing or submitting it online, together with the required fee, to NSHOF, 69 Prince George Street, Annapolis, MD 21401.

Entries must be received by 16 September, 2017.

3 SCHEDULE

- 3.1 **Registration: By mail or from the website. An Early Bird Discount (\$30) applies up to August 20th and regular registration (\$50) closes September 16, 2017 at 5:00 pm.**
- 3.2 **A Competitors’ Meeting will be held at 1730 on Saturday, Sept. 16, 2017 at NSHOF. Each boat is strongly encouraged to have a representative at the meeting!**
- 3.3 A potluck dinner will follow the Competitors’ Meeting.

- 3.4 **The scheduled time of the warning signal for the first start is 1100 on the Sunday, Sept. 17th.**

4 MEASUREMENTS

Boats shall be rated and scored using the Portsmouth Yardstick Handicapping System as modified for classic boats sailing in Annapolis Harbor. Entries without established ratings shall be given a rating by the Handicapping Committee based on measurements supplied by the owners or found from other sources.

Boats will be tentatively placed in one of five classes, depending on their type and the number of entries. If three or more boats of the same class are entered by the Early Bird Deadline, they may have their own class.

1. Unleaded – Dinghies
2. Premium – Dayboats, including large center boarders
3. Diesel 1 – Cruising boats
4. Diesel 2 – Cruising boats (the cruising class split will be based on design characteristics and will be announced no later than the Competitors' Meeting)
5. Jet Fuel or "Spirit of Tradition" - Boats designed after 1970 with features predominantly echoing those of pre-1970 design but which may have some modern features (the hulls must be wooden).

5 SAILING INSTRUCTIONS

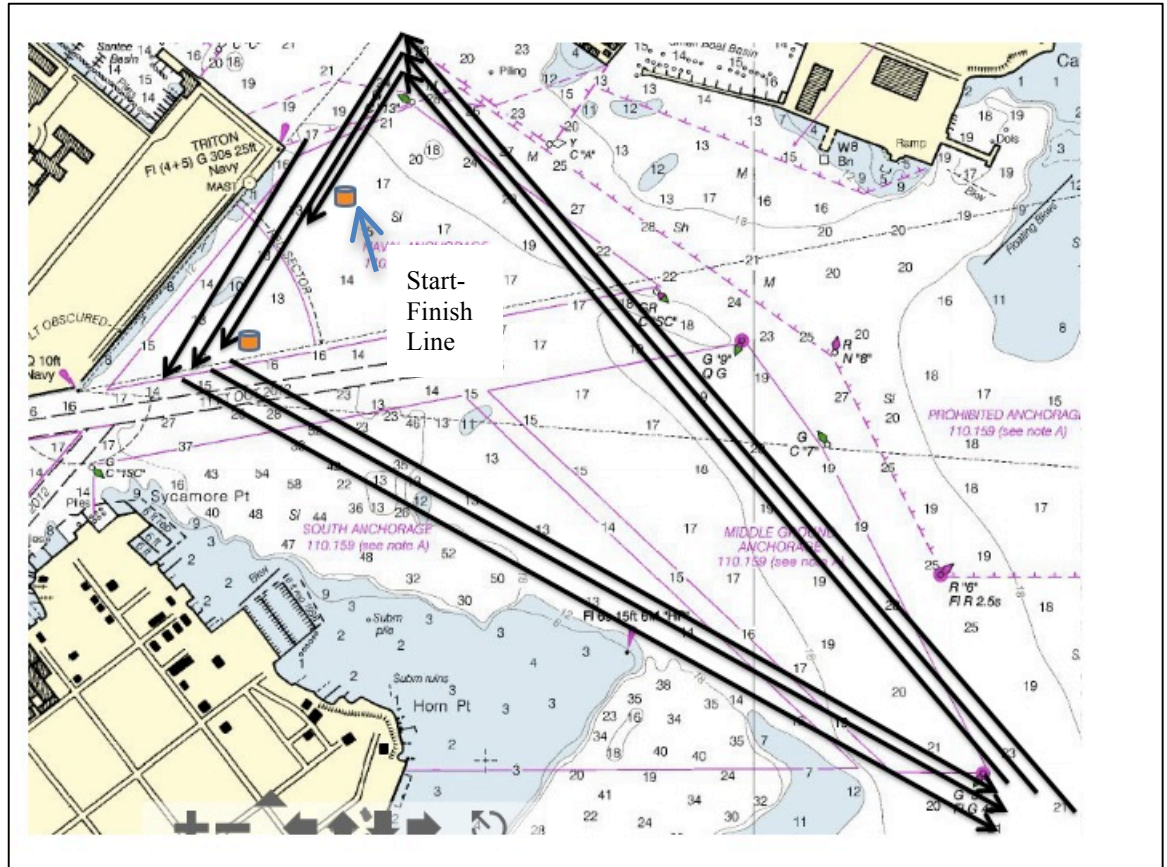
Copies of the Sailing Instructions will be available by 1730 on Saturday, September 16, 2017 at the National Sailing Hall of Fame dock and on the website. Attachment A, of the Sailing Instructions will be available at the Competitors' Meeting and may be posted on the website (but no guarantee!) It includes the boats' start times as well as the class each boat will sail in.

6 LAUNCHING AND DOCKAGE

Boats may tie up at the NSHOF docks free of charge starting the Wednesday before the event. For those requiring a hoist we can usually arrange one through nearby yacht clubs. A launch ramp is available at Truxton Park, about a mile up scenic Spa Creek. The Spa Creek Bridge has a vertical clearance of about 17-feet when closed. It opens on the hour and half hour except during weekday rush hours.

7 THE COURSE

The diagram below shows the course area. The approximate course length will be 5.4 NM (for three laps). The course may be shortened to one or two laps (three laps is shown). The Sailing Instructions include a full description of the course.



8 PRIZES

Prize flags will be given for 1st, 2nd and 3rd on corrected time in each class, plus awards for the oldest boat attending and the farthest travelled. Additional awards may be given at the discretion of the Race Committee.

9 DISCLAIMER OF LIABILITY

Competitors participate in the regatta entirely at their own risk. See Rule 4 of the Racing Rules of Sailing, Decision to Race. The organizing authority will not accept any liability for material damage or personal injury or death sustained in conjunction with or prior to, during, or after the regatta.

10 FURTHER INFORMATION

For further information on the race please contact Paul Miller at dawnpaulmiller@comcast.net (443-995-5579).